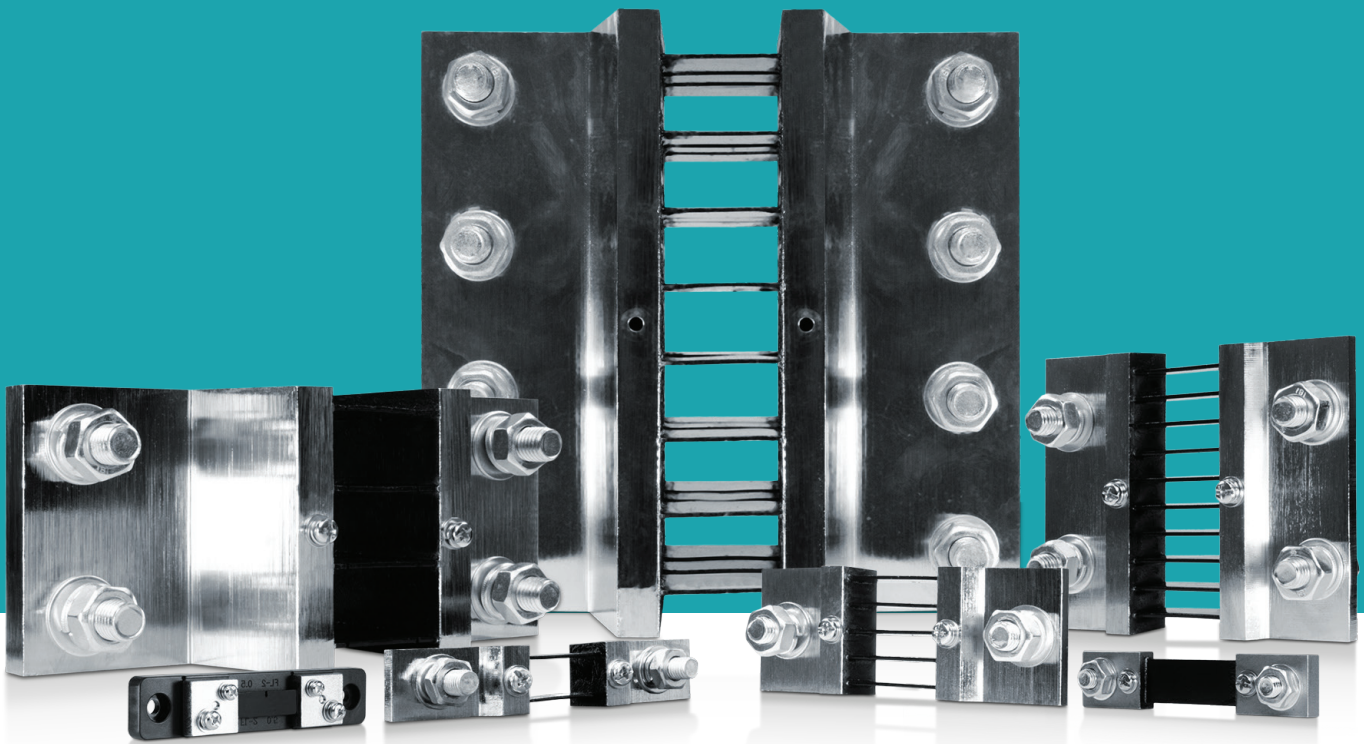


ACCUEVERGY

# Shunt Series

DC Current Shunt



D A T A S H E E T









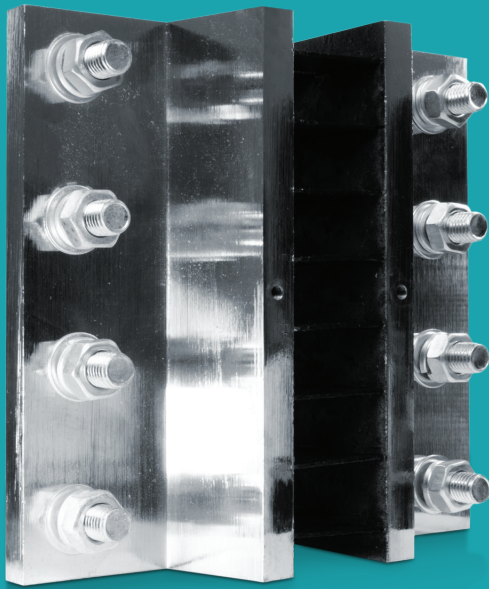




# Shunt Series

## Shunt-4000A

DC Current Shunt Datasheet



Accuenergy DC current shunts are engineered for precision measurement in DC current systems. Designed to connect to a DC power meter to measure electrical currents based on a small voltage drop, DC current shunts provide accurate energy measurements in a variety of applications including renewable energy, mass transit, battery charging, electric vehicles, welding, heavy industrial environments, and OEM applications.



- Accuracy class: 0.5%
- 75mV voltage drop



Accuenergy (Canada) Inc.

/RVBOHV7RURQZMLQHRVJLD

North America Toll Free: 1-877-721-8908

Web: [www.accuenergy.com](http://www.accuenergy.com)

Email: [marketing@accuenergy.com](mailto:marketing@accuenergy.com)

Revision Date: Sep 2021 Version: 1.0.0  
Specs Subject To Change Without Notice.



### 6SHF4FDRO

RATED CURRENT	
Rated Current	4000A
Current Range	10-120% of rated current
Accuracy	0.5%
Voltage Drop	75mV

### MECHANICAL/ENVIRONMENTAL

Form Factor	Inline installation
Exterior Dimensions	200.0mm x 190.0mm x 97.0mm 7.87" x 7.48" x 3.82"
Case Material	Manganin Alloy
Operating Temperature	-40°C to 60°C / -40°F to 140°F
Shunt Temperature w/ Load Current	<80°C (176°F) when load current <50A <120°C (248°F) when load current >50A
Storage Temperature	-55°C to 80°C / -67°F to 176°F
Operating Humidity	Non-condensing, 0 to 95% RH
Installation Conditions	Indoor Use

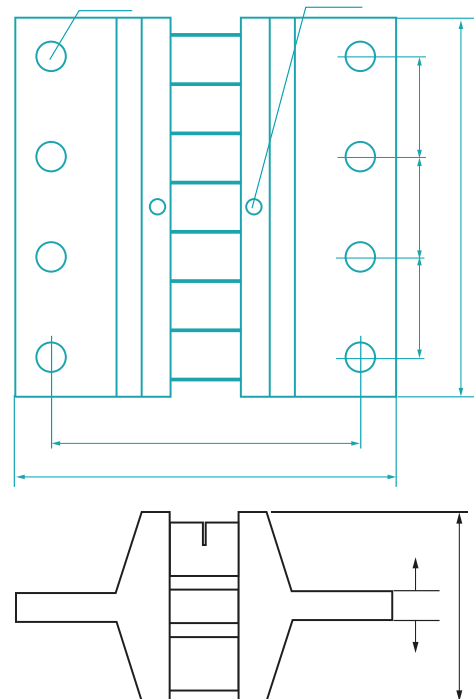
### ELECTRICAL

Frequency Range	DC
-----------------	----

### SAFETY/COMPLIANCE

Overload	120% of nominal current (2 hours)
RoHS	RoHS

### LPIQLRO



### 2UGURUDRO

	Rated Input	Voltage Drop
Ordering Number	Shunt - /	
Ordering Example	Shunt - 4000A /	75mV
	4000A	75mV