



AXM-WEB2

AcuVim II/ AcuVim-L Communications Module



D A T A S H E E T

AXM-WEB2

Dual Ethernet and Wi-Fi Communication Module Datasheet



AXM-WEB2 includes dual Ethernet ports and Wi-Fi communication channel for the Acuvim II and Acuvim-L Series power meters. Multi-protocols are supported such as IEC61850 2nd Ed., Modbus, MQTT, Google IoT, BACnet, and DNP3 V2.



Accuenergy Inc.

Los Angeles - Toronto - Pretoria
 North America Toll Free: 1-877-721-8908
 Web: www.accuenergy.com
 Email: marketing@accuenergy.com

Revision Date: February 2024 Version: 2.0.0
 Specs Subject To Change Without Notice.



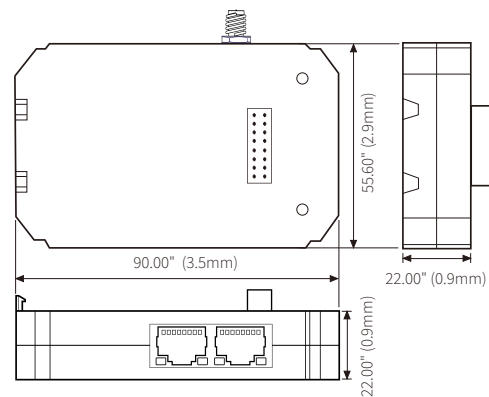
Communication

| | |
|--------------|---|
| Meter Series | Acuvim II, Acuvim-L |
| Ethernet | LAN Dual RJ45 10/100M Ethernet |
| Wi-Fi | 2.4GHz,5GHz |
| Protocols | IEC 61850 2nd Ed., EtherNet/IP, Modbus-TCP/IP, BACnet-IP, SNMP V3, DNP 3.0 V2, RSTP, SMTP, NTP Synchronization, HTTP/HTTPs post, FTP post, sFTP server, HTTPs webserver, Google IoT, MQTT |

Features

- + Dual Ethernet ports and Wi-Fi works simultaneously with different networks & DAQ systems. RJ45 supports individual network configuration COMTRADE file format for waveform capture and event data of electrical power systems
- + 8 GB onboard memory with 1-second interval datalogging capabilities. Metering data backup log to avoid data loss during network downtime
- + Industry leading Fast Read mode at 100ms and 20ms response rate via Modbus-TCP/IP protocol for real-time data updates
- + Secure TLS1.2/SSL compliant encrypted webserver for industry-leading cybersecurity standard EtherNet/IP and IEC 61850 protocol support for industrial automation, utility and substation
- + Remote access to WEB2 dashboard interface for real-time meter data, trend analysis, harmonics, waveform in graph and tabular format Wi-Fi supports Access Point mode and Station mode for both direct connection/configuration and public Wi-Fi network connection

Dimensions



Ordering Information

| | Module Type | - | Protocol |
|--------------------------|-------------|---|---------------------------|
| Ordering Example: | AXM-WEB2 | | |
| | AXM | | WEB2 |
| | | | Two Ethernet ports, Wi-Fi |

AXM-WEB2 FOLC

Fiber Optics, Ethernet, & Wi-Fi
Communication Module
Datasheet



AXM-WEB2 FOLC provides fast Fiber Optics LC port, single Ethernet port and Wi-Fi communication channel for the Acuvim II and Acuvim-L Series power meter. Multi-protocols are supported such as IEC 61850 2nd Ed., EtherNet/IP, Modbus, BACnet, DNP3 V2, Google IoT, and MQTT.



Accuenergy Inc.
Los Angeles - Toronto - Pretoria
North America Toll Free: 1-877-721-8908
Web: www.accuenergy.com
Email: marketing@accuenergy.com

Revision Date: February 2024 Version: 2.0.0
Specs Subject To Change Without Notice.



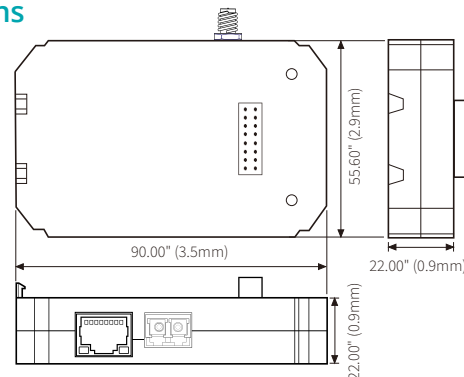
Communication

| | |
|-----------------------------|--|
| Meter Series | Acuvim II, Acuvim-L |
| Fiber Optics Connector Type | LC |
| Wavelength | 1310nm |
| Optical Fiber Details | Multimode 62.5/125 μm and 50/125 μm |
| Ethernet | LAN RJ45 10/100M Ethernet |
| Wi-Fi | 2.4GHz, 5GHz |
| Protocols | IEC 61850 2nd Ed., EtherNet/IP, Modbus-TCP/IP, BACnet-IP, SNMP V3, DNP 3.0 V2, SMTP, NTP Synchronization, HTTP/HTTPS post, FTP post, sFTP server, HTTPs webserv-er, Google IoT, MQTT |

Features

- + Duplex Fiber Optics LC connector, Ethernet port, and Wi-Fi works simultaneously with different networks & DAQ systems.
- + Secure TLS 1.2/SSL compliant encrypted webserver for industry-leading cybersecurity standard
- + Multimode 62.5/125 μm and 50/125 μm for data centers, battery storage and utility
- + COMTRADE file format for waveform capture and event data of electrical power systems
- + 8 GB onboard memory with 1-second interval datalogging capabilities. Metering data backup log to avoid data loss during network downtime
- + Industry leading Fast Read mode at 100ms and 20ms response rate via Modbus-TCP/IP protocol for real-time data update
- + 802.3u Fast Ethernet 100Base-FX compatible up to 2km
- + EtherNet/IP and IEC 61850 protocol support for industrial automation, utility and substation
- + Remote access to WEB2 dashboard interface for real-time meter data, trend analysis, harmonics, waveform in graph and tabular format
- + Wi-Fi supports Access Point and Station mode for both direct connection/configuration & public Wi-Fi network connection

Dimensions



Ordering Information

| Module Type | - | Protocol |
|------------------------------|---|----------------------------------|
| Ordering Example: AXM | | WEB2 FOLC |
| | | Ethernet, Fiber Optics LC, Wi-Fi |

AXM-WEB2-D

Dual Ethernet Communication Module Datasheet



AXM-WEB2-D includes dual Ethernet ports for the Acuvim II and Acuvim-L Series power meters. Multi-protocols are supported such as IEC61850 2nd Ed., Modbus, BACnet, MQTT, Google IoT, and DNP3 V2.

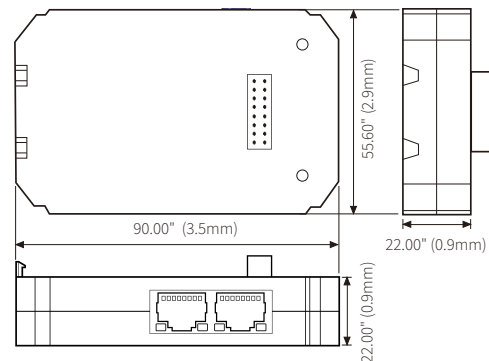
Communication

| | |
|--------------|---|
| Meter Series | Acuvim II, Acuvim-L |
| Ethernet | LAN Dual RJ45 10/100M Ethernet |
| Protocols | IEC 61850 2nd Ed., EtherNet/IP, Modbus-TCP/IP, BACnet-IP, SNMP V3, DNP 3.0 V2, RSTP, SMTP, NTP Synchronization, HTTP/HTTPS post, FTP post, sFTP server, HTTPs webserver, Google IoT, MQTT |

Features

- + Dual Ethernet ports works simultaneously with different networks & DAQ systems. RJ45 supports individual network configuration
- + COMTRADE file format for waveform capture and event data of electrical power systems
- + 8 GB onboard memory with 1-second interval datalogging capabilities. Metering data backup log to avoid data loss during network downtime
- + Industry leading Fast Read mode at 100ms and 20ms response rate via Modbus-TCP/IP protocol for real-time data updates
- + Secure TLS1.2/SSL compliant encrypted webserver for industry-leading cybersecurity standard
- + EtherNet/IP and IEC 61850 protocol support for industrial automation, utility, and substation
- + Remote access to WEB2 dashboard interface for real-time meter data, trend analysis, harmonics, waveform in graph and tabular format

Dimensions



Ordering Information

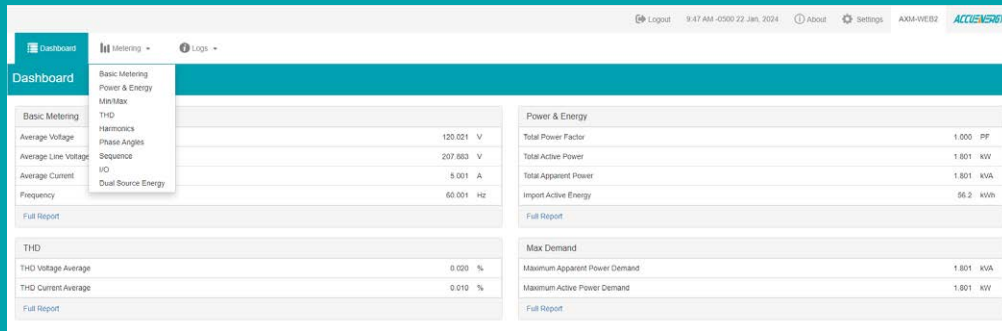
| | Module Type | - | Protocol |
|--------------------------|-------------------|---|--------------------|
| Ordering Example: | AXM-WEB2-D | | |
| | AXM | | WEB2-D |
| | | | Two Ethernet ports |



Accuenergy Inc.
 Los Angeles - Toronto - Pretoria
 North America Toll Free: 1-877-721-8908
 Web: www.accuenergy.com
 Email: marketing@accuenergy.com

Revision Date: July 2024 Version: 1.0.2
 Specs Subject To Change Without Notice.

WEB2 Interface

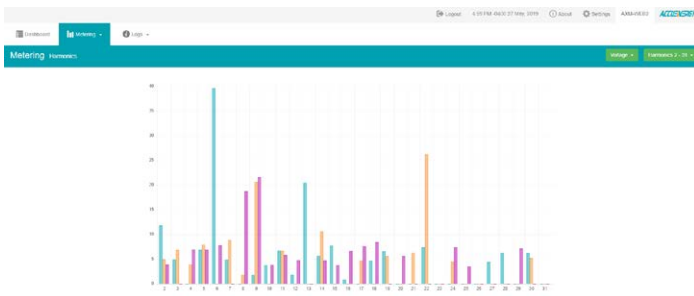


Metering Dashboard

- + Basic Metering
- + THD
- + Sequence
- + Power & Energy
- + Harmonics
- + I/O
- + Min/Max
- + Phase Angles

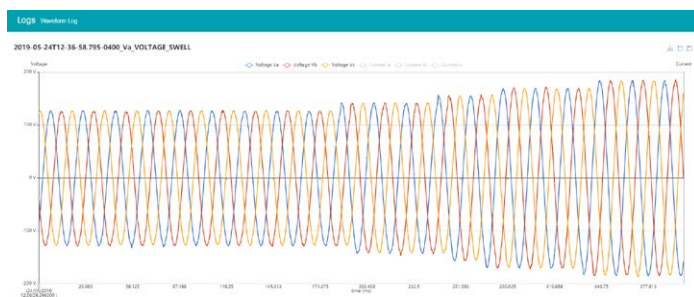
Metering Harmonics

Display voltage and current harmonics between 2nd - 3rd or 32nd - 63rd ingraphical and tabular format. Parameters are updated every 15 seconds.



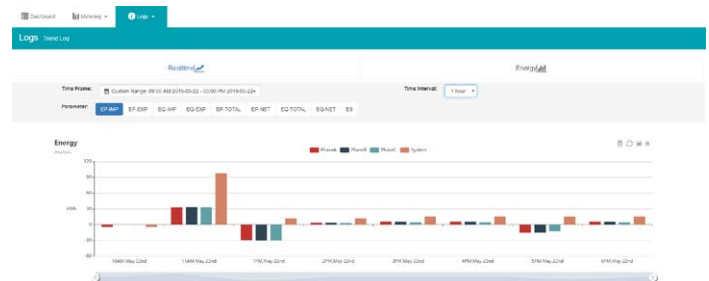
Waveform Log

Available for Acuvim IIW, it supports waveform capture when a power quality event occurs 10 cycles before and after the triggering point for voltage sag, swells, or over-current.



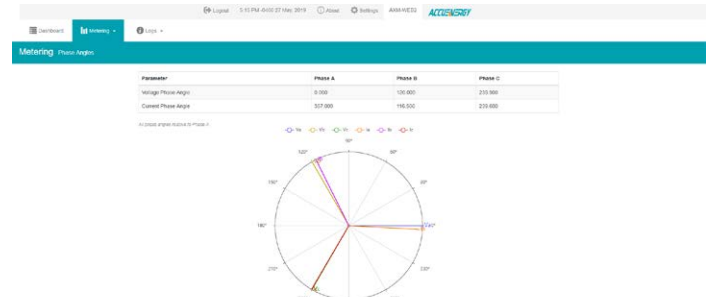
Trend Log

The real-time trend and energy trend graph shows a number of different parameters with option to configure different time frames and time intervals.






Phase Angle

Visual diagram of the phase angles of voltage and current waveform and can be used for remote troubleshooting. Parameters are updated every 10 seconds.



COMMUNICATION MODULES

● Function; ⊕ Option; Blank NA

| | Standard | AXM WEB2 FOLC | AXM WEB2 | AXM-WEB2-D |
|-------------------------|----------|---|--|---|
| | |  |  |  |
| Modbus-RTU | ● | | | |
| BACnet-MS/TP | ● | | | |
| DNP 3.0 Over IP | | ● | ● | ● |
| IEC 61850 | | ● | ● | ● |
| Modbus-TCP/IP | | ● | ● | ● |
| HTTP/HTTPs Webserver | | ● | ● | ● |
| SMTP Email | | ● | ● | ● |
| SNMP V3 | | ● | ● | ● |
| EtherNet/IP | | ● | ● | ● |
| MQTT | | ● | ● | ● |
| RSTP | | ● | ● | ● |
| IPv6 | | ● | ● | ● |
| HTTP/HTTPs Push | | ● | ● | ● |
| FTP Post | | ● | ● | ● |
| sFTP Server | | ● | ● | ● |
| Datalogging | 16MB | 8GB | 8GB | 8GB |
| BACnet-IP | | ● | ● | ● |
| PROFIBUS | | | | |
| Wi-Fi | | ● | ● | |
| RJ45 Ports | | 1 | 2 | 2 |
| Fiber Optics LC | | ● | | |